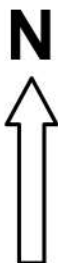


2021 Half Marathon By-The-Sea

(21.0975 km)

Manchester By-The-Sea, Massachusetts



USATF Certificate

MA16301BK

Effective: 09/13/2021

Through: 12/31/2026

Note: This course was measured using the full width of the road and the Shortest Possible Route (SPR).

Start/Finish marked by a spot of white paint.

Start/Finish: On east side of Manchester Essex Regional Middle High School (36 Lincoln St, Manchester-by-the-Sea, MA) east driveway 4 ft 6 inches north of the beginning of a granite curb and end of a stone wall, 49 ft 6 inches SW of the middle of an Electric Service manhole cover in a recessed curb section of the driveway and opposite a large outdoor light for the school's football field.

Note: Map not drawn to scale. Many streets and cross streets not on map.

Start/Finish (S/F) Detail

